

C5 Programming

Overview

The C5 software is comprised of several modules that connect to a Central Database. This allows users of multiple machines and offline stations to program simultaneously without the risk of overwriting or duplicating data.

Online Programming

The C5 can be setup as a stand alone system requiring no additional software to program and operate it. Most programming and editing tasks can be done on the C5 while the machine is populating boards. The following modules come standard with every machine.

Manager Module:

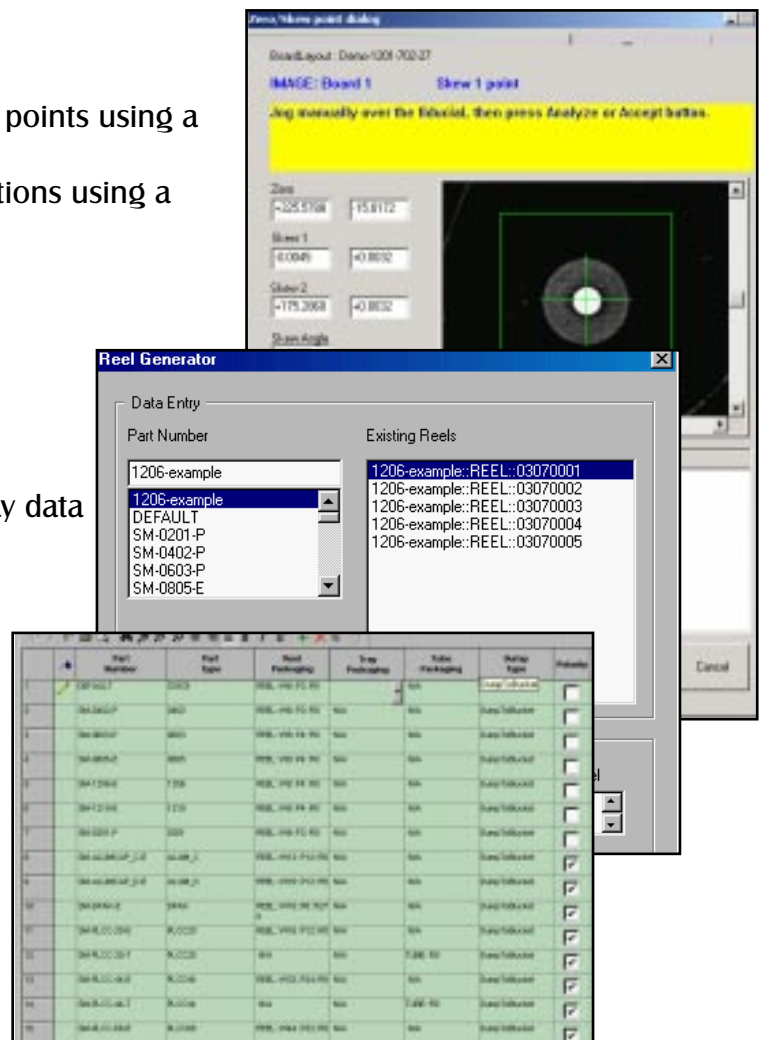
- Teach or verify board zero and skew points using a downward looking camera
- Teach or verify circuit reference locations using a downward looking camera
- Kitting trays

Inventory Module:

- Kit feeders
- Create component reel, tube and tray data
- View real time inventory status

PCB Programming Module:

- CAD Import
- Create and edit of PCB programs
- Create and edit the component libraries



Offline Programming

To increase efficiency and productivity in this information age, several offline options are available. The **PCB Programming Module (PSM)** and the **Kitting Options - EZ Kit, EZ Scan, and EZ Scan with Traceability**.

PCB Programming Module (PSM)

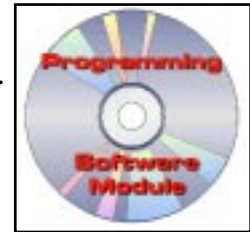
The machine database is shipped with large default component libraries to help minimize programming tasks. This is the main module for the machine programmer. It allows:

Creating PCB programs through:

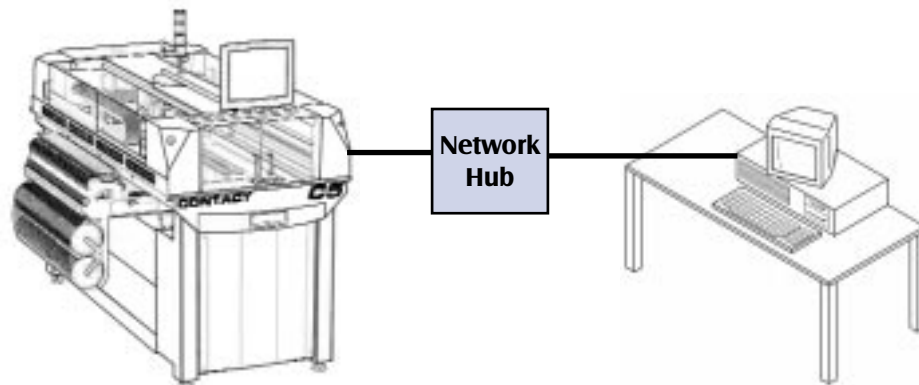
- CAD Import: import from files with ASCII or CONTACT 3 formats.
- Wizards: Easy to use step by step creation of program files.

Creating and editing component libraries:

- Customer Part Number library.
- Add to the large default libraries: Part type, Vision, Motion, etc.



These modules are installed on an offline PC that is supplied by the customer and networked with the C5 as illustrated.



CONTACT offers the Offline PC (OLPC) option that provides a quick and error free offline station setup.

- Latest Pentium 4 based PC.
- Window XP Professional.
- Flat Screen LCD Monitor.
- Network hub and cables.
- CSI software pre-loaded and configured with purchased software and hardware

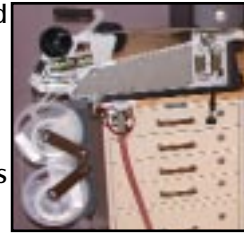


Kitting Options

EZ Kit

The EZ Kit package allows the feeders to be programmed on a networked PC without tying up the machine. The package contains a Networked Feeder Station (NFS) and the Offline Feeder Programming software.

The networked feeder station connects to a PC (not included), and provides power, air, and a connection to the C5 data base. When a feeder is plugged into the station, the feeder programming software instantly displays its current information, and allows editing. The new information gets saved to the data base, and will be automatically accessed when the feeder is mounted on the machine.



Networked Feeder Station



Offline Feeder Programming

EZ Scan

The next step in offline feeder programming is EZ Scan, which adds barcoding as well as inventory control. EZ Scan contains a Networked Feeder Station (NFS), the Offline Feeder Programming software, a Bar Code Printer & Scanner, and the Inventory Software Module (ISM)*.

EZ Scan further streamlines the feeder programming process by adding barcode capability and inventory control. Barcode labels can be printed for each reel and tube, containing the component information. When the reel/tube is loaded on the feeder, the operator simply scans the barcode, and feeder is automatically programmed via the networked feeder station. The Inventory Software Module allows you to track component quantities in real time.



Networked Feeder Station



Offline Feeder Programming



Bar Code Printer & Scanner



Inventory Software Module

EZ Scan with Traceability

The next step in offline feeder programming is EZ Scan with Traceability, which adds the ability to track every component placement to its source while maintaining real-time inventory. EZ Scan with Traceability contains a Networked Feeder Station (NFS), the Offline Feeder Programming software, a Bar Code Printer & Scanner, and the Inventory Software Module (ISM)* with Traceability.

Component traceability is a powerful tool for inventory and quality control. Instead of creating barcodes for part numbers, this option enables you to create ID's for individual reels and tubes with the Inventory software module. Your entire stockroom can be entered into the database, and a running inventory is updated in real time. A detailed log that includes dates and part lot numbers is kept of each placement, so that boards with suspect components can be identified.



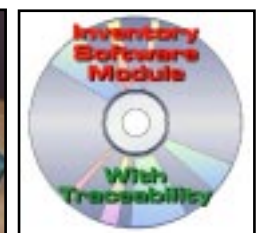
Networked Feeder Station



Offline Feeder Programming



Bar Code Printer & Scanner



Inventory Module w/Traceability

* Additional seats of ISM can be purchased for inventory management.

Typical Configurations

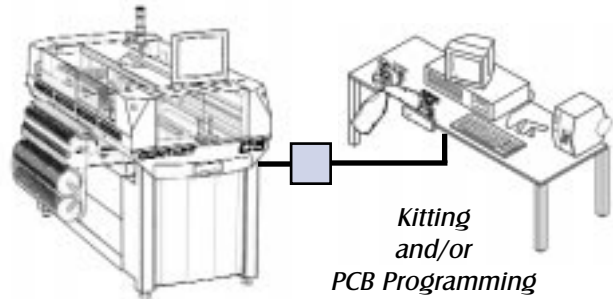
Stand Alone C5

This is the most basic configuration. All PCB programming and kitting is done on the machine.



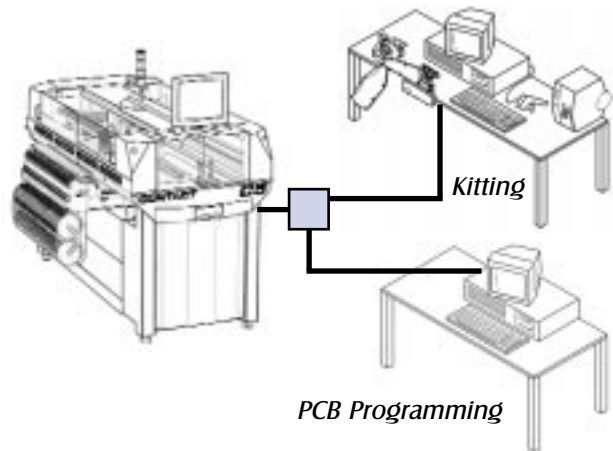
C5 with an Offline PCB Programming/Kitting Station

This configuration adds an offline station to handle kitting and/or PCB programming.



C5 with an Offline PCB Programming/Kitting Station

This configuration provides separate workstations for kitting and PCB programming.



C5 with Offline PCB Programming, Kitting, Stockroom, and Purchasing Stations

This provides separate workstations for kitting, PCB programming, barcode labeling (stockroom), and a station for inventory management.

